



KC4501 PROCESS GAUGE

STANDARD SPECIFICATIONS:

- DIAL:** 4 1/2" Diameter
- CONNECTION:** 1/4" or 1/2"NPT Lower Connect
- CASE:** Thermoplastic–Solid Front/Blow-Out Back
- LENS:** Plastic Shatterproof (Safety Glass Avail)
- POINTER:** Micro-Adjustable
- BOURDON TUBE:** 316L Stainless Steel
- SOCKET :** 316L Stainless Steel
- MOVEMENT:** Heavy Duty 304 SS
- ACCURACY:** 0.5 % Full Scale

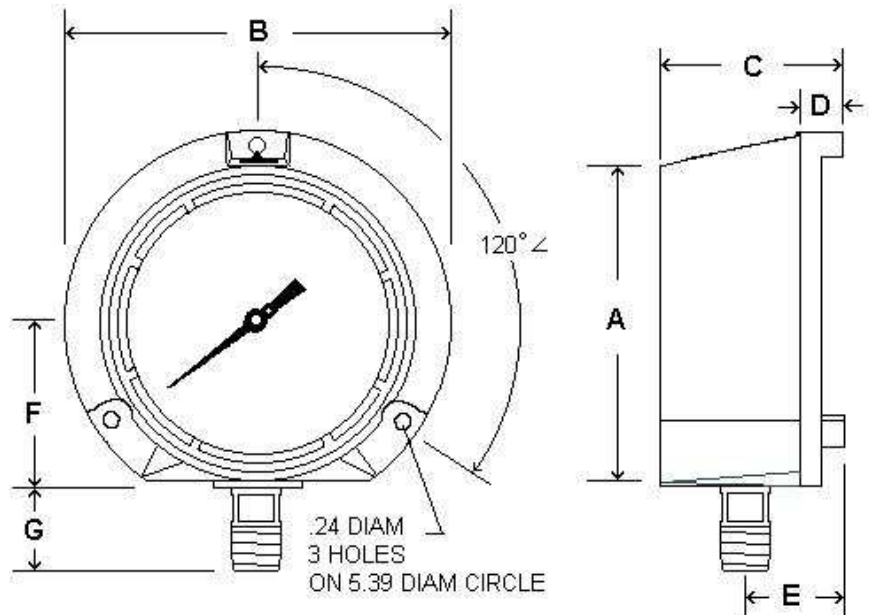


STANDARD FEATURES

- Overload and Underload Stops
- Hermetically Sealed / Weather Proof
- Liquid Fillable / No Kit Required

Ranges and Dimensions:

RANGE	FIGURES	MINOR
30"-0 hg vac	5"	0.2"
30"-0-15	10" & 5 psi	1" & 0.5 psi
30"-0-30	10" & 5 psi	1" & 0.5 psi
30"-0-60	10" & 10 psi	2" & 1 psi
30"-0-100	10" & 20 psi	2" & 1 psi
30"-0-150	10" & 30 psi	5" & 2 psi
30"-0-200	10" & 50 psi	5" & 2 psi
30"-0-300	10" & 50 psi	10" & 5 psi
30"-0-600	10" & 100 psi	10" & 10 psi
0-15 psi	3 psi	0.2 psi
0-30 psi	5 psi	0.2 psi
0-60 psi	5 psi	0.5 psi
0-100 psi	10 psi	1 psi
0-160 psi	20 psi	1 psi
0-200 psi	20 psi	2 psi
0-300 psi	50 psi	2 psi
0-400 psi	50 psi	2 psi
0-600 psi	50 psi	5 psi
0-800 psi	100 psi	5 psi
0-1000 psi	100 psi	10 psi
0-1500 psi	250 psi	10 psi
0-2000 psi	200 psi	20 psi
0-3000 psi	500 psi	20 psi
0-5000 psi	1,000 psi	50 psi
0-10,000 psi	1,000 psi	100 psi
0-15,000 psi	2,500 psi	100 psi
0-20,000 psi	2,000 psi	200 psi



	A	B	C	D	E	F	G	NPT
INCH	5.07	5.91	3.03	.91	1.38	2.56	1.38	1/2" or
MM	129	150	77	23	35	65	35	1/4"



**KODIAK
CONTROLS
INCORPORATED**

KC4501SC SS CASE PROCESS GAUGE

STANDARD SPECIFICATIONS:

DIAL: 4 1/2" Diameter

CASE: Stainless Steel

Solid Front/Blow-Out Back

LENS: Plastic

POINTER: Micro-Adjustable

BOURDON TUBE: 316 Stainless Steel

SOCKET : 316 Stainless Steel

MOVEMENT: 304 SS Heavy Duty Bushed

ACCURACY: 0.5 % Full Scale



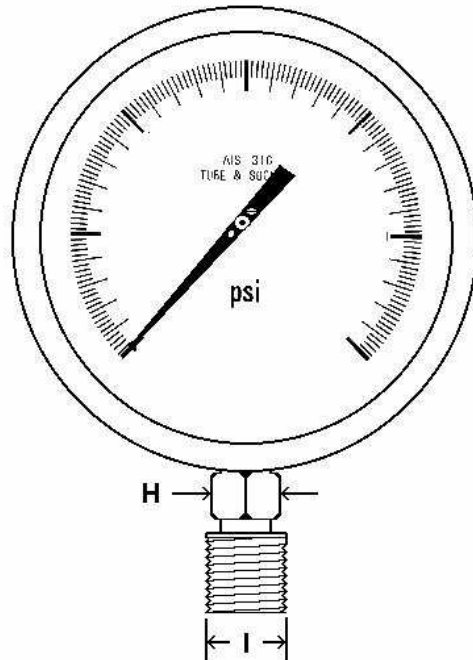
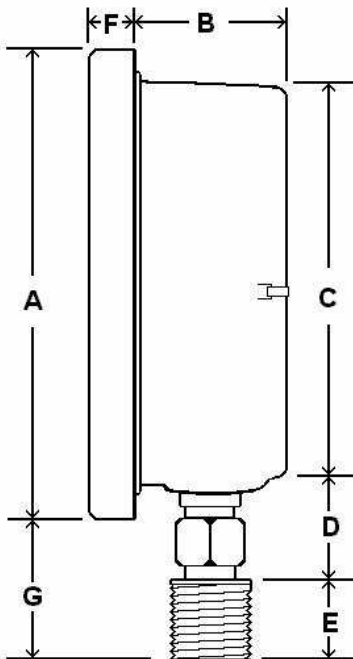
STANDARD FEATURES

*Overload and Underload Stops

*Hermetically Sealed / Weather Proof

*Welded Case and Connection

*Liquid Fillable / No Kit Required



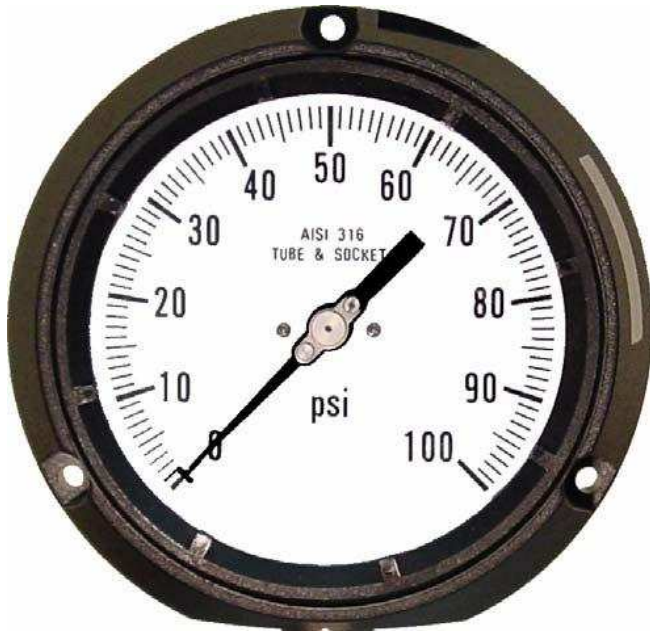
	A	B	C	D	E	F	G	H	I (=NPT)
INCH	5.42"	1.62"	4.75"	1.10"	.81"	.61"	1.50"	.75"	1/2" or
MM	138	41	120	28	20	15.5	38	19	1/4"

RANGE	FIGURES	MINOR
30"-0 hg vac	5"	0.2"
30"-0-15	10" & 5 psi	1" & 0.5 psi
30"-0-30	10" & 5 psi	1" & 0.5 psi
30"-0-60	10" & 10 psi	2" & 1 psi
30"-0-100	10" & 20 psi	2" & 1 psi
30"-0-150	10" & 30 psi	5" & 2 psi
30"-0-200	10" & 50 psi	5" & 2 psi
30"-0-300	10" & 50 psi	10" & 5 psi
30"-0-600	10" & 100 psi	10" & 10 psi
0-15 psi	3 psi	0.2 psi
0-30 psi	5 psi	0.2 psi
0-60 psi	5 psi	0.5 psi
0-100 psi	10 psi	1 psi
0-160 psi	20 psi	1 psi
0-200 psi	20 psi	2 psi
0-300 psi	50 psi	2 psi
0-400 psi	50 psi	2 psi
0-600 psi	50 psi	5 psi
0-800 psi	100 psi	5 psi
0-1000 psi	100 psi	10 psi
0-1500 psi	250 psi	10 psi
0-2000 psi	200 psi	20 psi
0-3000 psi	500 psi	20 psi
0-5000 psi	1,000 psi	50 psi
0-10,000 psi	1,000 psi	100 psi
0-15,000 psi	2,500 psi	100 psi
0-20,000 psi	2,000 psi	200 psi



**KODIAK
CONTROLS
INCORPORATED**

4502 BACK CONNECT PROCESS



STANDARD SPECIFICATIONS:

DIAL: 4 1/2" Diameter

CASE: Phenolic–Solid Front /Blow-Out Back

LENS: Plastic

POINTER: Knife Edge Micro-Adjustable

BOURDON TUBE: 316 Stainless Steel

SOCKET : 316 Stainless Steel

MOVEMENT: 304SS Heavy Duty Bushed

ACCURACY: 0.5 % Full Scale

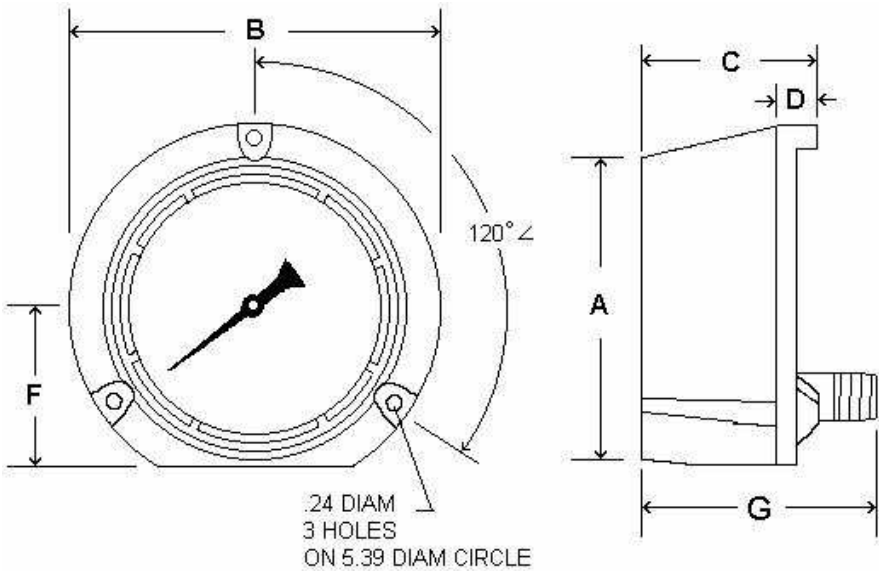
STANDARD FEATURES

*Overload and Underload Stops

*Knife Blade Pointer for Precision Reading

*Hermetically Sealed / Weather Proof

*Liquid Fillable / No Kit Required



	A	B	C	D	F	G	NPT
INCH	5.08	5.84	3.44	1.10	2.54	4.27	1/2" or
MM	129	148	87	28	65	108	1/4"

RANGE	FIGURES	MINOR
30"-0 hg vac	5"	0.2"
30"-0-15	10" & 5 psi	1" & 0.5 psi
30"-0-30	10" & 5 psi	1" & 0.5 psi
30"-0-60	10" & 10 psi	2" & 1 psi
30"-0-100	10" & 20 psi	2" & 1 psi
30"-0-150	10" & 30 psi	5" & 2 psi
30"-0-200	10" & 50 psi	5" & 2 psi
30"-0-300	10" & 50 psi	10" & 5 psi
30"-0-600	10" & 100 psi	10" & 10 psi
0-15 psi	3 psi	0.2 psi
0-30 psi	5 psi	0.2 psi
0-60 psi	5 psi	0.5 psi
0-100 psi	10 psi	1 psi
0-160 psi	20 psi	1 psi
0-200 psi	20 psi	2 psi
0-300 psi	50 psi	2 psi
0-400 psi	50 psi	2 psi
0-600 psi	50 psi	5 psi
0-800 psi	100 psi	5 psi
0-1000 psi	100 psi	10 psi
0-1500 psi	250 psi	10 psi
0-2000 psi	200 psi	20 psi
0-3000 psi	500 psi	20 psi
0-5000 psi	1,000 psi	50 psi
0-10,000 psi	1,000 psi	100 psi
0-15,000 psi	2,500 psi	100 psi
0-20,000 psi	2,000 psi	200 psi

Solid Front Process Gauge with Aluminum Case Type: 4504, 6504

The Precision Instrument Corporation model 4504 and 6504 is a solid front process gauge with an aluminum front flange safety case with a black enamel finish. The aluminum black wrinkle enamel coated ring makes these gauges well suited for panel board applications. The front screw lets users open the window and permits easy panel installation. There is a solid wall between the pressure sensing unit and the window, which provides greater safety for personnel monitoring the gauges.

The bourdon tube with socket may be selected in brass, stainless steel or monel material. If choose, for example, stainless steel, then all the internal parts such as bourdon tube, socket, movement, screws, washers, etc. will be stainless steel. The stainless steel sensing element is suitable use in corrosive media and the pressure system is not subject to damage.

Precision Instrument Corporation gauge models 4504 and 6504 are supplied as dry only and available dial sizes are 4 1/2" or 6". The 4 1/2" dial is the standard gauge size. The 6" dial size is used where distance is a factor allowing viewing from a greater distance.



SPECIFICATIONS

- Solid front with pressure relief opening to ASME B40.1 standard that will protect users from fluid and particle in the event of failure and particle in the event of failure.
- The aluminum case with black wrinkle ring can resist rugged and high temperature environment.
- The stainless steel rotary geared movement reduces friction and corrosion which assures smooth-moving pointer and accurate pressure indication.
- Maximum and minimum pressure stop of movement can be offered to protect against damage caused by sudden vacuum or overpressure.
- Model 4504 and 6504 are lower back connection location with front flange panel mount gauges.

Dial Size

4 1/2" (115mm) or
6" (150mm)

Case & Ring

Aluminum case & ring
with black enamel

Socket Material

316-Stainless steel.
Brass or Monel K-500

Mounting

Stem or panel mount

Window Material

4 1/2" - Polycarbonate
6" - Glass

Bourdon Tube

316-Stainless steel
Brass or Monel K-500

Pointer

Anodized aluminum
with black finish

Scale

PSI, kPa, Bar, kg/cm
(single or dual scale)

Connection Size

1/2" or 1/4" NPT stand.
(JIS and BSP avail.)

Accuracy

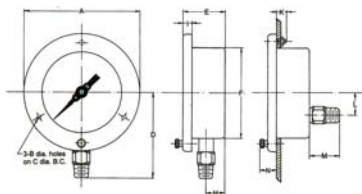
Grade 2A to ASME B40.1
(full scale 0.5% accuracy)

DIMENSION

TYPE 4504, 6504

Dial Size	A	B	C	D	E	F	G	H	I	J	K	L	M	N	Gauge Wt
4 1/2" (115mm)	6.181" (157)	0.236" (6)	5.354" (135)	4.488" (114)	2.283" (58)	4.764" (121)	-	0.984" (25)	0.512" (13)	-	0.787" (20)	1.181" (30)	1.614" (41)	0.906" (23)	
6" (150mm)	7.563" (192)	1/4" - 20UNC	7.008" (178)	5.197" (132)	2.756" (70)	4.764" (121)	6.378" (162)	1.102" (28)	0.669" (17)	0.236" (6)	0.787" (20)	1.339" (34)	1.496" (38)	1.377" (35)	

**4 1/2"
Dial Size
4504**



**6"
Dial Size
6504**

